

Hello!

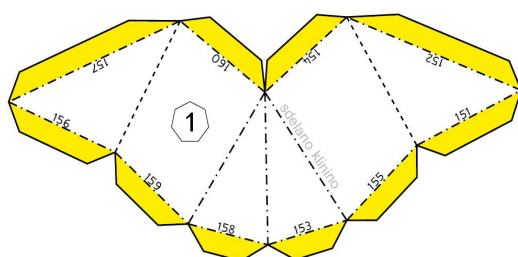
Thank you for purchasing the papercraft template from @sdelano_klinino! This is a text instruction that will help you assemble your figure from cardboard.

You'll need:

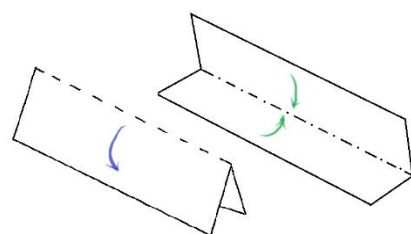
- **printer** to print the template.
- **cardboard**. We recommend to use thicker paper or thin cardboard (180g-300g / 90lb-110lb cover), it's up to you.
- **scissors or stationery knife**.
- **ruler** (most convenient to use a metal ruler).
- **glue or tape**. You can use them to attach the matching numbered parts together. We recommend using white glue for creativity (for example, Giotto Bricolage or carpenter's PVA glue). Choose a tube of glue with a thin spout or apply the glue to the parts using a small paint brush.
- **surface for cutting** (Something to avoid ruining the surface when cutting, for example, a cutting mat or a piece of plywood).

Print the file on sheets of cardboard. By using the printer scale setting, you can easily scale the whole design to get a bigger model. (Print the pattern on A3/ Ledger or Tabloid size paper and scale up to 140%)

What are these symbols and lines? Look at this images:



- solid line is the border of the part. Along this line, we cut with scissors or a stationery knife,;
- dash-dotted line – fold line **ON ITSELF**;
- the dotted line is the fold line **FROM ITSELF**;
- valves are highlighted in yellow for example. This is the part of a detail that is used to glue one detail to the next.



The fold lines must be prepared so that the fold is neat. To do this, swipe them with a thin object. (For example, a non-writing pen, an awl, or the back of a stationery knife). You need to push on the lines, but not cut through. Then bend the cardboard along the lines using a ruler.

And 2 more important points:

- **The faces of two parts with the same small numbers are glued together**
- **All symbols and lines remain inside.**



Open the instruction file when you start building. Every detail has its own number with large symbols. Follow these numbers and you will succeed! Have a good time!

Our instagram @sdelano_klinino. Join us! :)